

PULSOFLEX

SOFT LIGHT - JUST RIGHT.



A WIDE SELECTION OF SHAPES AND SIZES.

PHOTOGRAPHERS HAVE RELIED ON BRONCOLOR SOFT BOXES FOR MORE THAN 20 YEARS, USING THEM BOTH IN THE STUDIO AND ON LOCATION AS MAIN AND FILL-IN LIGHTS. THE ADVANTAGES OF THESE TEXTILE CONSTRUCTION LIGHT-SHAPERS ARE OBVIOUS: VERY LITTLE WEIGHT FOR THEIR SIZE; A DESIGN WHICH PRACTICALLY ELIMINATES SCATTERED LIGHT AND GUARANTEES STRONG, GLOWING COLOUR; AND UNIFORM ILLUMINATION. SHADOWS CAN BE EITHER PRONOUNCED AND CLEARLY DEFINED OR SMOOTHLY GRADUATED, DEPENDING ON REFLECTOR SIZE AND DISTANCE FROM THE OBJECT.

Many possibilities.

Textile light-shapers have become an indispensable tool in modern photography. Their strong colour saturation and ease of set-up offer many creative possibilities. Additional arguments in favour of broncolor soft boxes are their low weight and the fact that very little space is needed to store these area lights once they have been disassembled.

The two broncolor soft box ranges.

broncolor offers two different ranges of textile light-shapers to meet every photographer's individual needs:

Pulsoflex EM was developed specifically for very demanding users who insist on enhanced colour saturation, quick assembly and the ability to use accessories.

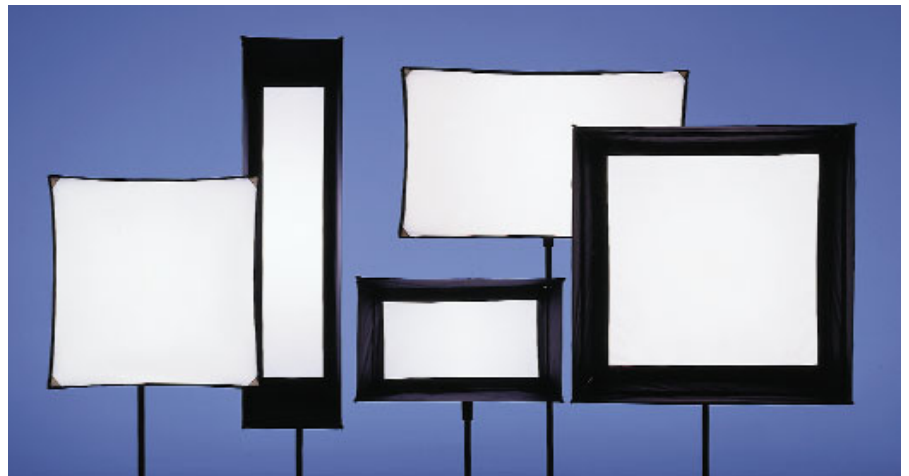
Pulsoflex C is aimed principally at users looking for economical solutions with extremely compact dimensions.

The character of the light from Pulsoflex EM can be varied: these soft boxes can be used for special effects with a variety of accessories for certain formats, and can even be used without diffusers.

Accessories available for the most common (80×80 cm, 32×32") format include barn doors, textile masks, louvre sets, honeycomb grids and diffusing foils on aluminium frame.

Pulsoflex C: lightweight and reasonably priced.

broncolor developed its second product range, Pulsoflex C, to help new photog-



Pulsoflex EM: sophisticated and expandable.

The light surface of Pulsoflex EM soft boxes is neatly sealed all round. The raised rim reduces scattered side light, and ensures particularly strong and saturated colours.

Pulsoflex EM offers another advantage: the rods fit into special hollow seams for easy assembly and disassembly. Neither the rods nor the diffusers need to be dismantled for transport: the adapter ring is simply detached from the soft box, which can then be folded. That saves lots of time, and makes Pulsoflex EM ideal for location work as well.

raphers get started and for established users who can do without the convenience features of the EM series. This range is simpler, and therefore more reasonably priced. Pulsoflex C is a system of six lightweight, easily disassembled light shapers yielding high light quality, in either square or rectangular format.

A special twist.

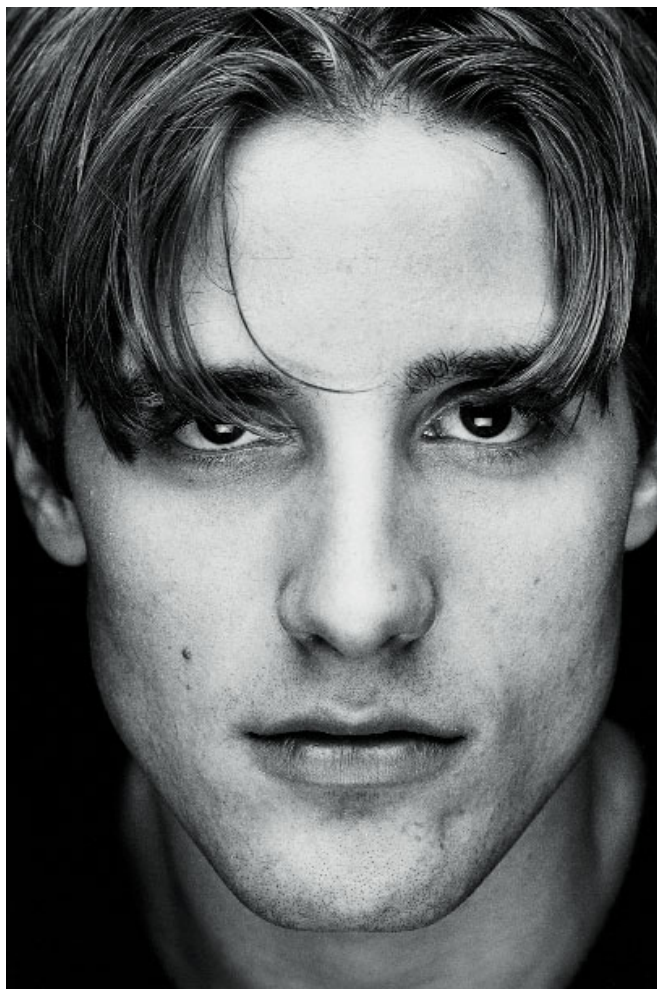
Pulsoflex soft boxes fit onto all broncolor lamp bases and compact units. With the revolving adapter ring, reflectors can easily be exchanged or rotated 360° about the long axis. This is especially useful with rectangular formats.

For continuous light, too.

Any of the new Pulsoflex EM and C soft boxes with edge lengths of at least 80 cm (32") can also be used for broncolor HMI F575 continuous lights.

You have the choice.

Pulsoflex EM and C are supplied without adapter rings, allowing the photographer to select between the two different adapter rings for each particular application. Users can also save money by purchasing only the actual number of adapter rings that will be used at any one time. The two adapter rings are identical for all box formats.



PULSOFLEX: IN THE STUDIO AND ON LOCATION.

PULSOFLEX REFLECTORS ARE SUITABLE FOR ALMOST EVERY APPLICATION IN CATALOGUE, ADVERTISING AND FASHION PHOTOGRAPHY. AND BECAUSE THEY ARE SO EASY TO TRANSPORT, THEY ARE ALSO PARTICULARLY USEFUL FOR OUTDOOR SHOTS - FOR INDUSTRY, ADVERTISING ETC.

Light on demand.

Pulsoflex reflectors offer outstanding light quality with brilliant detail reproduction. The material combination of a diffuser and a silvered reflector yields optimum light output. The textile diffuser ensures uniform light distribution while still allowing a slight concentration at the centre, offering sparkling reproduction with gentle highlights. Pulsoflex reflector illumination is far superior to any type of diffused lighting with umbrellas, since scattered light is practically eliminated and the light can easily be controlled and modified. Light scattering towards the lens can also be easily blocked out.





Photograph: Adriano A. Biondo, Basel/Switzerland, for Annabelle

Set-up of the portrait:

- Camera: 6×6
- Lens: 50 mm
- f-stop: f:4.0
- Shutter speed: 1/30 s
- Film: 100 ISO
- Light source: Grafit A4 power pack; outlet 1: 34 J
Pulso F4 lamp with Pulsoflex EM 100×140

Mixed light of daylight and flash. Low setting to have a long shutter speed. Large soft box to include the entire room, but asymmetrically combined with daylight on the right.



Set-up of the still life:

- Camera: 6×6
- Lens: 50 mm
- f-stop: f:5.6 1/2
- Shutter speed: 1 s
- Film: 100 ISO
- Light source: Grafit A4 power pack; outlets 1+2
1 Pulso F4 lamp with Pulsoflex EM 100×140, 23.3 J
1 Pulso F4 lamp with Pulsoflex EM 30×110, 15.0 J

Mixed light of daylight, flash and modelling light. Low setting to have a long shutter speed (1 s) and to integrate the modelling light as a glancing light. Large soft box to combine the room with daylight in a homogeneous way. Smaller soft box to put the accent on the glancing light directed towards the object.



WIDE RANGE OF ACCESSORIES, EASILY ATTACHED.

LIGHTWEIGHT, HANDY, EXCELLENT LIGHT QUALITY, EASY TO ASSEMBLE AND TRANSPORT - PULSOFFLEX REFLECTORS ARE RECOMMENDABLE IN EVERY RESPECT. THE RANGE OF ACCESSORIES ALLOWS NUMEROUS LIGHTING EFFECTS TO BE ACHIEVED, AND THE TWO SEPARATELY AVAILABLE ADAPTER RINGS HELP SAVE MONEY, SINCE PHOTOGRAPHERS NEED ONLY AS MANY ADAPTERS AS WILL BE USED AT ONE TIME.

Handy.

broncolor folding reflectors are supplied with a practical carrying bag and are very easy to assemble. In the Pulsoflex EM series, the tubes are enclosed in special hollow seams and therefore do not need to be dismantled for transport.

Light intensity on demand.

The ring with heat shield fits all Pulsoflex EM and C units. This ring produces uniform illumination with any light source. For thermal reasons, this ring must not be used with the broncolor HMI F575 lamp base.

The adapter ring with integrated reflector can be used with Pulsoflex EM or C on any flash light source. For use with the broncolor HMI F575 lamp base the edge lengths of the Pulsoflex must be at least 80 cm (32"). When combined with focusable lamps, this adapter ring can yield an enhanced, centre-weighted light concentration that can be smoothly defocused into a uniform illumination.

Pulsoflex soft boxes can be effortlessly installed on the lamp base, and can be used on tripods, Flamingo stands, Super-booms or on pantographs.



Adapter ring with heat shield, for Pulsoflex EM/C (not for use with broncolor HMI F575 lamp base)



Adapter ring with integrated reflector, for Pulsoflex EM/C and broncolor HMI F575 lamp base (from edge-length 80 cm/32" only), for enhanced light concentration

Accessories à la carte.



Pulsoflex EM 80×80



Louvre set
to Pulsoflex EM 80×80
comprising 6 louvres



Honeycomb grid
to Pulsoflex EM 80×80



Diffusing foil on frame
to Pulsoflex EM 80×80
frame made of aluminium



Set of barn doors
to Pulsoflex EM 80×80
comprising two wings
and two textile masks



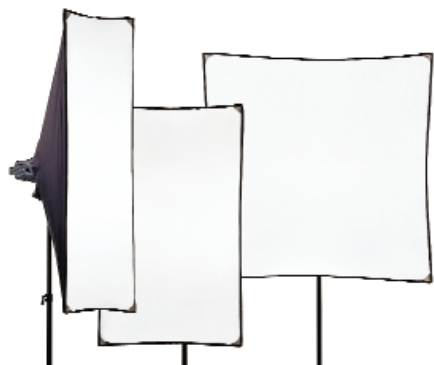
TECHNICAL DATA.

Pulsoflex EM



Size in cm (")	f-stop at 2 m (6½ ft.) distance, 100 ISO, 3200 J, with clear flash tube and adapter ring with heat shield	Weight in grams (lbs)
50×50 (20×20")	f:32 ² / ₁₀	850 (1.9 lbs)
80×80 (32×32")	f:32 ⁸ / ₁₀	1170 (2.6 lbs)
110×110 (44×44")	f:32 ⁷ / ₁₀	2140 (4.7 lbs)
35×60 (14×24")	f:32 ⁷ / ₁₀	850 (1.9 lbs)
55×95 (22×38")	f:32 ² / ₁₀	1070 (2.4 lbs)
80×140 (32×56")	f:32 ⁷ / ₁₀	2090 (4.6 lbs)
30×110 (12×44")	f:32 ¹ / ₁₀	1400 (3.1 lbs)
40×155 (16×62")	f:32 ¹ / ₁₀	1970 (4.4 lbs)

Pulsoflex C



Size in cm (")	f-stop at 2 m (6½ ft.) distance, 100 ISO, 3200 J, with clear flash tube and adapter ring with heat shield	Weight in grams (lbs)
70×70 (28×28")	f:32 ⁴ / ₁₀	500 (1.1 lbs)
100×100 (40×40")	f:32 ⁴ / ₁₀	760 (1.7 lbs)
150×150 (60×60")	f:32 ¹ / ₁₀	760 (1.7 lbs)
60×100 (24×40")	f:32 ⁴ / ₁₀	600 (1.3 lbs)
80×140 (32×56")	f:32 ³ / ₁₀	560 (1.2 lbs)
35×120 (14×48")	f:32 ² / ₁₀	560 (1.2 lbs)

Subject to change in the interest of product enhancement.

Pulsoflex reflectors are the result of many years of broncolor experience and cutting-edge technology. All Pulsoflex folding reflectors are manufactured by hand

in Europe to broncolor specifications. We offer a 2-year factory warranty.

broncolor: Your best investment for the future.

Made in Switzerland.


THE LIGHT

Bron Elektronik AG
4123 Allschwil / Switzerland
www.bron.ch